

Metal-cutting Machine Tool Orders for Feb., 2005

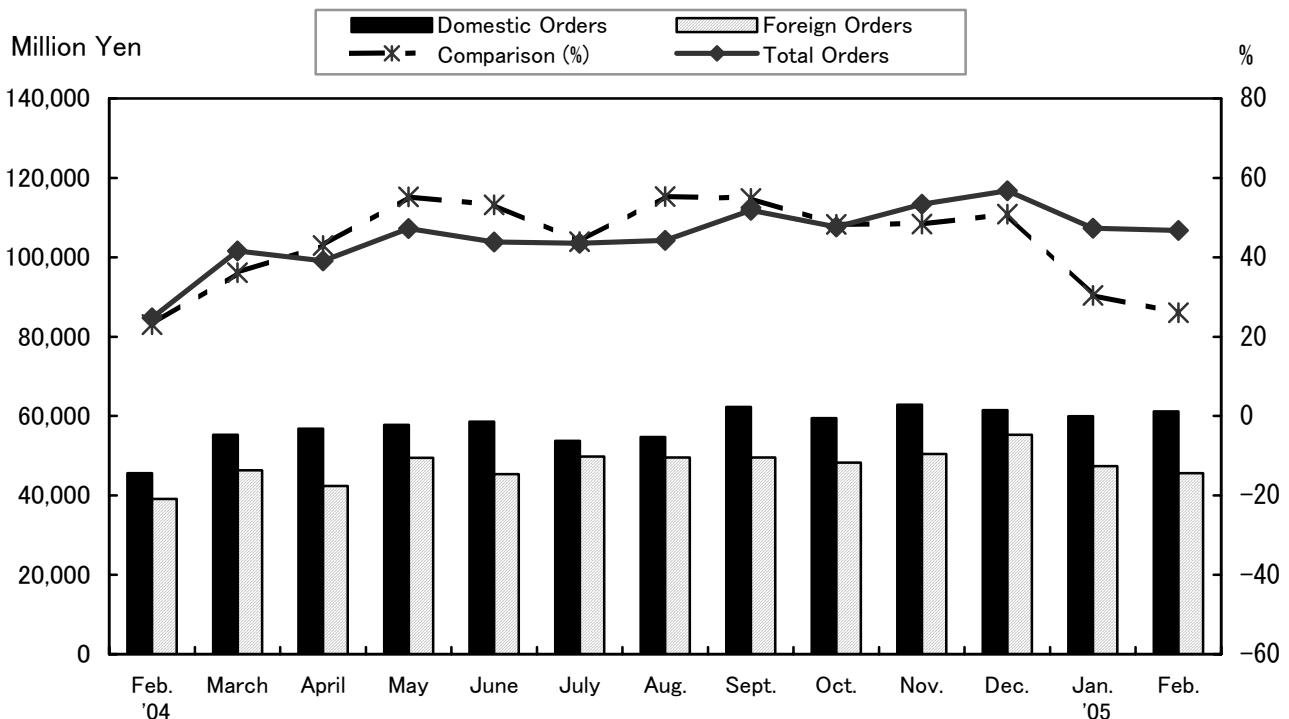
1. February Orders, Sales, Order Backlog

Orders totaled ¥106,755 million. Total orders during the first two months of 2005 amounted to ¥214,058 million.
 Off 0.5% from the previous month. Up 28.2% from the same period a year ago.
 Up 26.0% from a year earlier. (29th month of consecutive year-on-year gain.)

Sales totaled ¥88,740 million. Total sales during the first two months of 2005 amounted to ¥174,095 million.
 Up 4.0% from the previous month. Up 35.4% from the same period a year ago.
 Up 29.1% from a year earlier.

Order backlog amounted to ¥605,623 million.
 Up 2.0% from the previous month. Up 52.2% from a year earlier.

Monthly Order Trends Feb. '04 – Feb. '05



2. Domestic Demand by Sector (11 Industries)

Domestic orders accounted for ¥61,168 million.

Up 2.0% from the previous month. Up 34.3% from a year earlier.
(29th month of consecutive year-on-year gain.)

Of the eleven key domestic demand sectors, five (fabricated metal products, general machinery, electrical machinery, others and trading firms & agents) increased from the previous month.

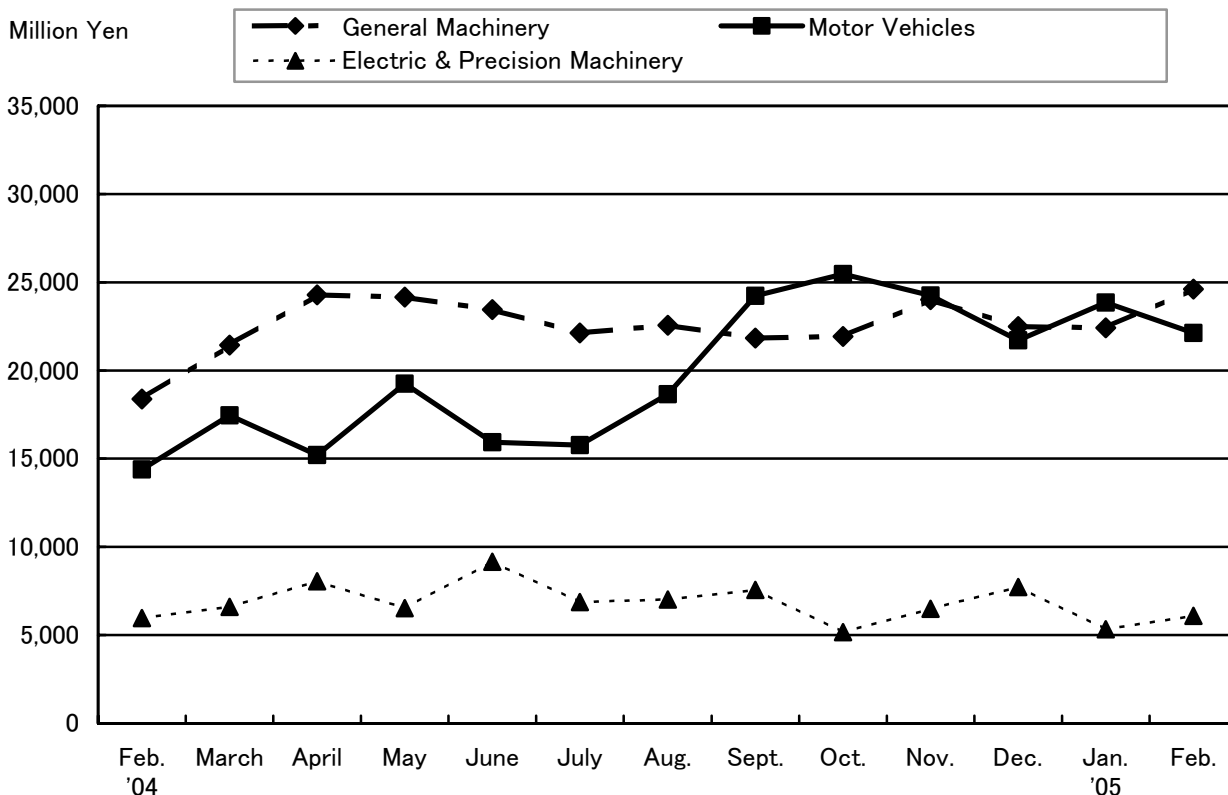
Compared with a year earlier, eight except (precision machinery, other machinery & equipment and government, public agencies & schools) increased orders, led by:

General machinery ¥24,614 million (+9.8% from Jan. '05, +34.0% from Feb. '05)

Motor vehicles ¥22,124 million (-7.3%, +53.7%)

Electrical & Precision machinery ¥6,089 million (+14.3%, +2.1%)

**Monthly Domestic Order Trends by Sector
(Feb. '04 –Feb. '05)**



3. Foreign Demand by Region

Foreign orders accounted for ¥45,587 million.

Off 3.7% from the previous month. Up 16.4% from a year earlier.

(29th month of consecutive year-on-year gain.)

North America marked the 17th month of consecutive year-on-year gain. Europe marked the 14th month of consecutive year-on-year gain.

North America: ¥14,105 million (-16.6% from Jan, '05, +48.5% from Feb., '05)

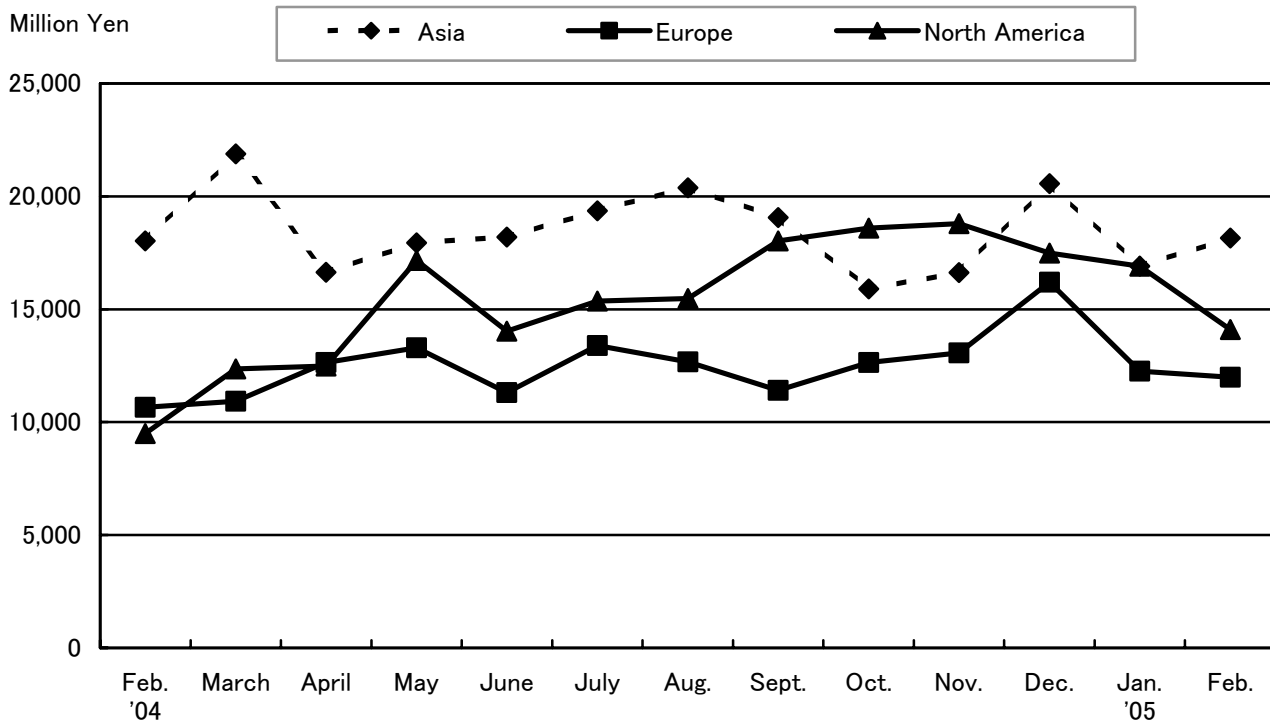
Europe: ¥11,983 million (-2.2%, +12.4%)

East Asia marked the year-on-year decline for two consecutive months.

Other Asian regions made the 20th months of consecutive year-on-year gain.

Asia: ¥18,149 million (+7.4%, +0.7%)

Monthly Foreign Order Trends by Region
(Feb. '04 – Feb. '05)



Contact: Keiko Honda, International Marketing Dept. at JMTBA

Tel: +81-3-3434-3961 Fax: +81-3-3434-3763 E-Mail: intl@jmtba.or.jp

NET NEW ORDERS – METAL CUTTING MACHINE TOOLS IN JAPAN

(February 2005)

By Industry	(Value in millions of Yen)						
	Feb. 05	Feb. 04	Comparison (%) Feb. 05/Jan.05	Comparison (%) Feb. 05/Feb.04	Year-to- Date 2005	Year-to- Date 2004	Comparison(%) 05/04
1. Primary Metals	755	606	76.9	124.6	1,737	1,135	153.0
2. Fabricated Metal Products	2,321	1,746	134.0	132.9	4,053	3,326	121.9
Machinery & Equipment Industries (3-7)	54,377	39,537	101.5	137.5	107,964	78,061	138.3
3. General Machinery (of which dies and molds)	24,614 (5,995)	18,375 (4,589)	109.8 (110.5)	134.0 (130.6)	47,038 (11,422)	36,171 (8,778)	130.0 (130.1)
4. Electrical Machinery	4,010	3,164	155.2	126.7	6,593	7,284	90.5
5. Motor Vehicles (of which auto parts)	22,124 (8,565)	14,390 (5,706)	92.7 (100.8)	153.7 (150.1)	45,980 (17,064)	27,685 (12,708)	166.1 (134.3)
6. Shipbuilding & Transport Equipment	1,550	807	78.4	192.1	3,528	1,472	239.7
7. Precision Machinery	2,079	2,801	75.7	74.2	4,825	5,449	88.5
8. Other Machinery & Equipment	2,490	2,746	99.0	90.7	5,006	5,325	94.0
9. Government, Public Agencies & Schools	135	226	93.8	59.7	279	427	65.3
10. Others	293	162	129.6	180.9	519	498	104.2
11. Trading Firms & Agents	797	530	105.8	150.4	1,550	1,216	127.5
Domestic Total(1-11)	61,168	45,553	102.0	134.3	121,108	89,988	134.6
12. Foreign Orders	45,587	39,156	96.3	116.4	92,950	77,026	120.7
Total Orders (1-12)	106,755	84,709	99.5	126.0	214,058	167,014	128.2
of which NC type	102,076	79,363	99.8	128.6	204,402	156,834	130.3
Sales	88,740	68,714	104.0	129.1	174,095	128,557	135.4
of which NC type	84,269	64,779	103.1	130.1	165,986	121,239	136.9
Order Backlog	605,623	397,908	102.0	152.2	605,623	397,908	152.2
of which NC type	563,434	362,507	102.0	155.4	563,434	362,507	155.4

Source: Japan Machine Tool Builders' Association